

Smart Plug



User Manual

plenti SOLAR

Erneuerbare Energie



www.plentisolar.de

Product Introduction

It is a 16A Wi-Fi smart socket, made of imported flame-retardant materials, ensuring safety and reliability. It is designed for use in the Balcony Photovoltaic Storage System, capable of linking with device scenarios and can be remotely controlled via the Storcube APP on your mobile phone.



Specifications

Project Description	Technical Specifications
Voltage	AC 100V ~ 240V
Frequency	50 / 60Hz
Operating Temperature	-20°C ~ 50°C
Maximum Current	16A
WiFi	2.4G 802.11b / g / n

1

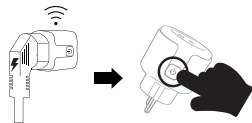
Connection Method

1

Press and hold the top button of the socket for 5 seconds after powering on to enter the network pairing mode.

2

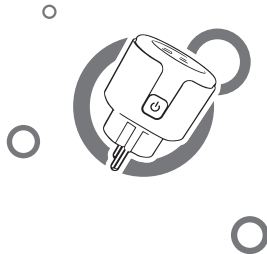
Enter the Wi-Fi settings on your phone/computer and look for a network named "smartplug_xxx". Connect to this network.

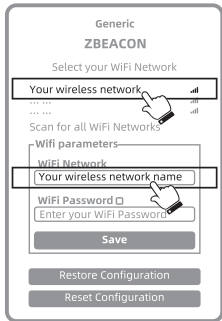


3

Once connected, your phone/computer will automatically redirect to the socket's network setup page. Select or enter your Wi-Fi network name, input the password, and click the "Save" button to complete the network setup.

2





① Click on your wireless network or enter the name of your wireless network

3



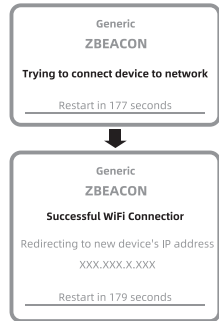
② Enter your WiFi password

4



③ Click "Save"

5



④ Connection Successful

6